



GAT MONTHLY MEMBERSHIP PROGRESS REPORT

Results as of: 8/31/2021

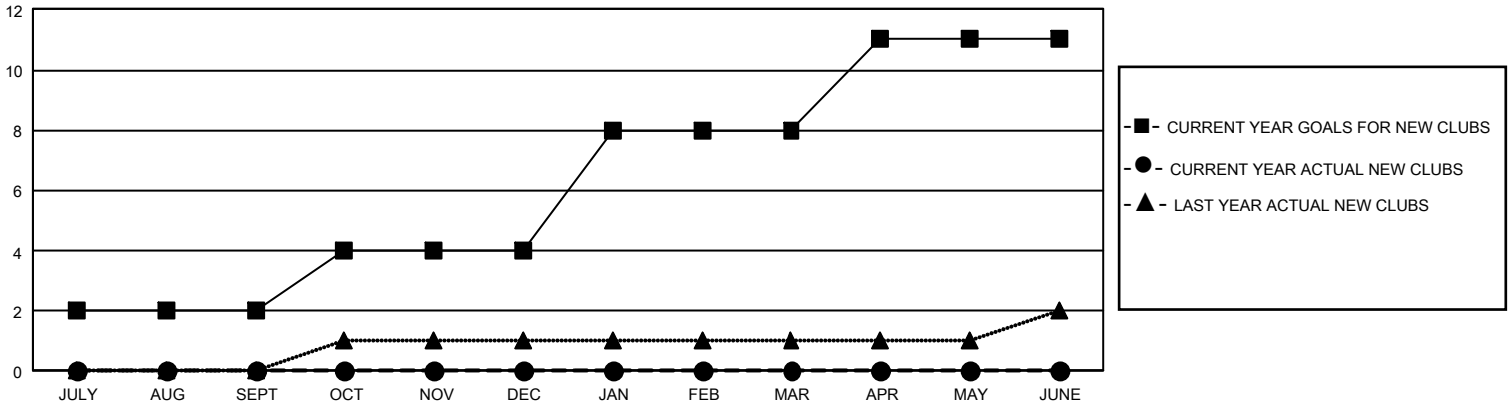
GMT Constitutional Area 5 - J, Group J

REPORT DOES NOT INCLUDE CLUBS IN UNDISTRICTED AREAS.

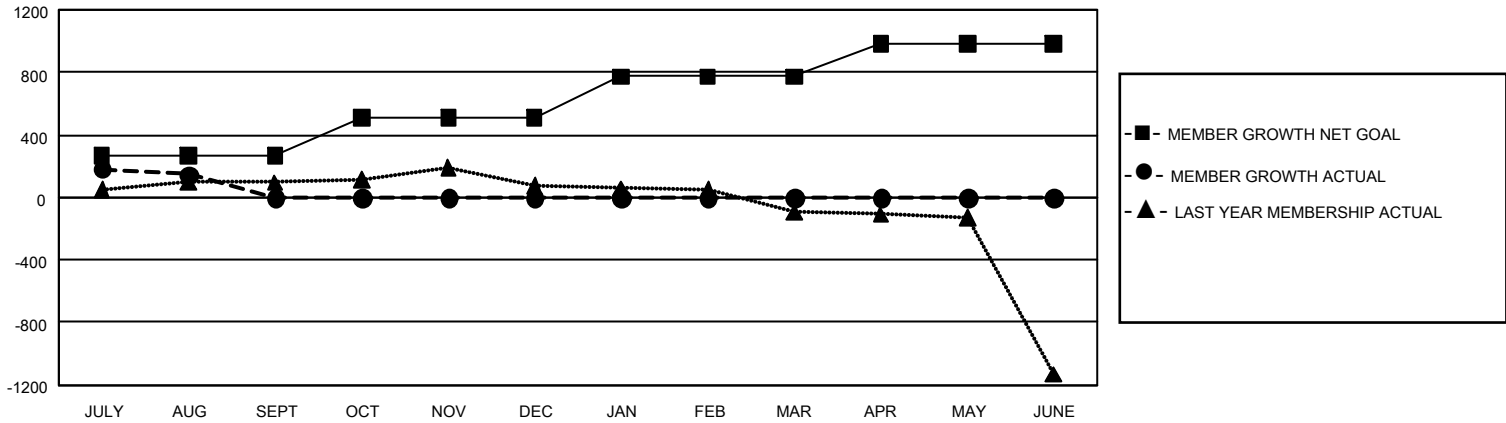
Clubs			
RESULTS FOR 2021-2022			
QUARTER	NEW CLUB GOAL	NEW CLUBS	DROPPED CLUBS
JULY/AUG/SEPT	6	0	0
OCT/NOV/DEC	6	0	0
JAN/FEB/MAR	12	0	0
APR/MAY/JUNE	9	0	0

Members			
RESULTS FOR 2021-2022			
QUARTER	MEMBER GROWTH NET GOAL	MEMBER GROWTH ACTUAL	DROPPED MEMBERS ACTUAL (including transfers)
JULY/AUG/SEPT	265	530	349
OCT/NOV/DEC	245	0	0
JAN/FEB/MAR	265	0	0
APR/MAY/JUNE	205	0	0

GOALS AND ACTUAL NEW CLUBS CUMULATIVE



GOALS AND ACTUAL MEMBERS CUMULATIVE



DROPPED CLUBS: 0	282 CLUBS OF 769 ADDED 1 OR MORE NEW MEMBERS	<u>GENDER DISTRIBUTION</u>	
<u>DROPPED MEMBERS</u>		MALE	21,960 (78.93%)
DECEASED	39	FEMALE	5,861 (21.07%)
CLUB CANCELLED	0	NON BINARY	0 (0.00%)
OTHER	312	PREFER NOT TO ANSWER	0 (0.00%)
TOTAL	351	TOTAL FAMILY UNIT MEMBERS	7,532
	CLICK HERE FOR CUMULATIVE MEMBERSHIP DATA	FAMILY MEMBERS PAYING HALF DUES	4,123